



# QUESTION #2: \$60,200,000



## ACADEMICS

**ADAPTIVE SPACES** PROVIDING AN **ENRICHING EXPERIENCE** THAT MOTIVATES STUDENTS TO ACQUIRE KNOWLEDGE THROUGH **COLLABORATION AND COMMUNICATION**.

RECOGNIZES THE IMPORTANCE OF **COMMUNITY AND COLLABORATION** WITH **FLEXIBLE BREAKOUT SPACES** ALLOWING **EDUCATION OUTSIDE OF THE CLASSROOMS**.

A PLACE TO DELIVER **GREAT EDUCATION**, AN ENVIRONMENT TO FOSTER **POSITIVE EXPERIENCES**, AND A TOOL TO **CONNECT WITH THE LARGER COMMUNITY**.

**21ST CENTURY LEARNING** WITH TECHNOLOGY THAT OPENS THE ENTIRE CAMPUS TO LEARNING AND PROMOTING **INDEPENDENT THINKING**.

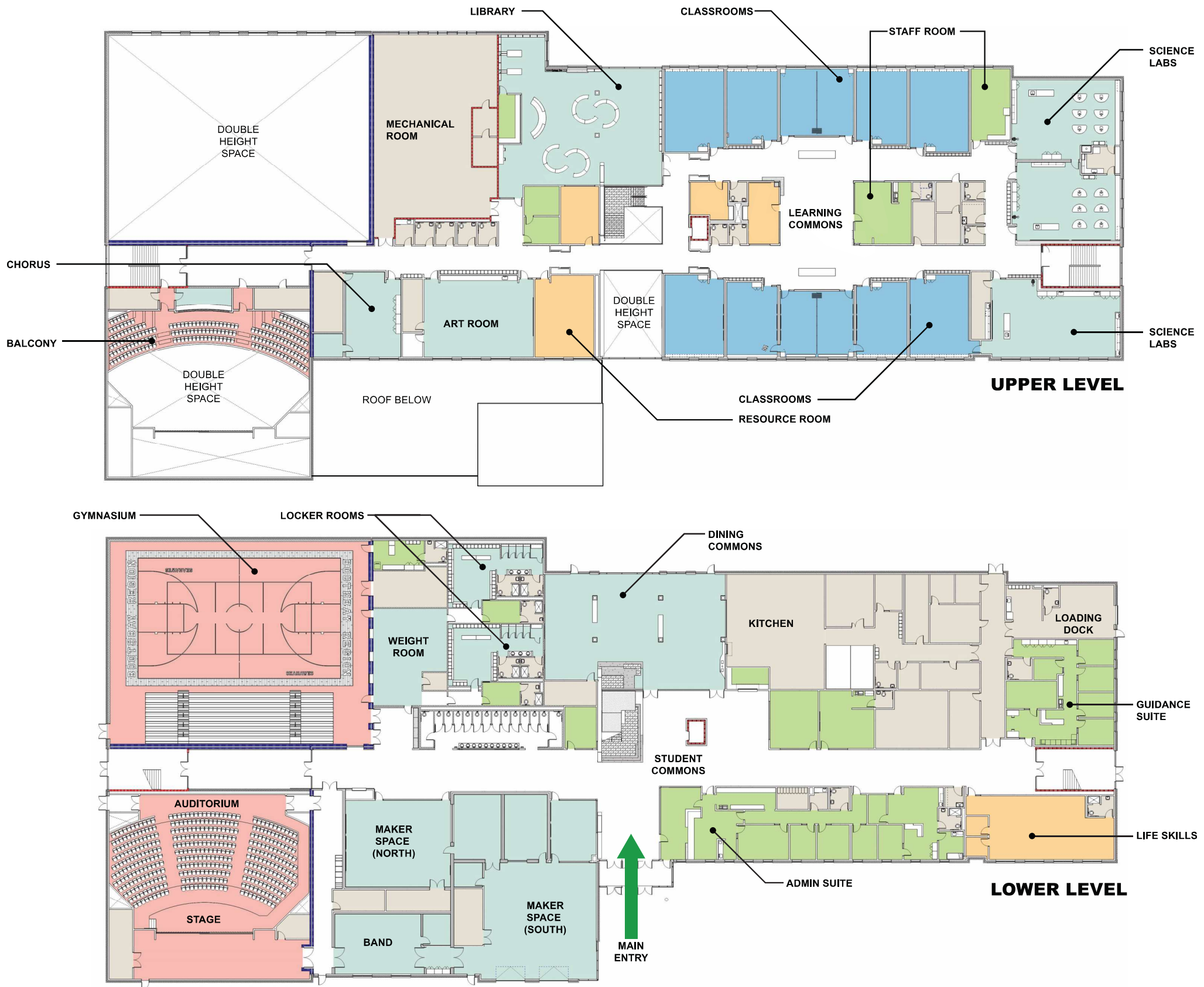
## SAFETY

**SAFE AND SECURE MAIN ENTRANCE** WITH DIRECT INTERACTION WITH ADMINISTRATION TEAM AND **CONTROLLED ACCESS** TO THE SCHOOL

**LIMITED EXTERIOR ENTRY POINTS** WITH ACCESS CONTROL HARDWARE AND **DOOR ALARMS** TO NOTIFY ADMINISTRATION IF DOORS ARE PROPPED OPEN

**CLEAR SITE LINES** WITHIN THE SCHOOL, AND LOOKING OUT OF THE SCHOOL, TO INCREASE VISUAL MONITORING AND **IMPROVED SAFETY OF THE STUDENTS, STAFF, AND CAMPUS**

**INTEGRATED "SHELTER IN PLACE" ZONES** LOCATED THROUGHOUT THE BUILDING TO PROVIDE **SAFE AREAS** THAT ARE DESIGNED INTO THE SPACE FOR **EFFICIENT AND SAFE USE**



## SUSTAINABILITY

TARGET ENERGY USE INTENSITY (EUI) OF **32 EUI** WHICH IS ABOUT **54% MORE EFFICIENT THAN THE EXISTING HIGH SCHOOL**. ENERGY USE INTENSITY IS THE "MILES PER GALLON" FOR A BUILDING

**HIGHLY EFFICIENT EXTERIOR ENVELOPE** WITH INCREASED INSULATION, TRIPLE PANE INSULATED WINDOWS, ELIMINATE BUILDING AIR LEAKAGE, AND **INCREASED THERMAL COMFORT**

**REDUCED DEPENDENCY ON FOSSIL FUELS** BY USING HIGHLY EFFICIENT **AIR SOURCE HEAT PUMPS** AND FUTURE ON-SITE ENERGY HARVESTING WITH **ROOF MOUNTED SOLAR PANELS**

SUSTAINABILITY FEATURES DESIGNED TO INCREASE **HEALTH AND WELLNESS** BY INCREASING **NATURAL LIGHT**, BETTER **INDOOR AIR QUALITY**, AND **BALANCED ACOUSTICS**.

## COMMUNITY

ALL COMMUNITY FOCUSED PROGRAMS ARE LOCATED ON THE MAIN FLOOR TO ALLOW FOR **EASILY ACCESSIBLE COMMUNITY USE** WITHOUT GIVING FREE ACCESS TO THE REST OF THE SCHOOL

**COMMUNITY FOCUSED PROGRAMS** INCLUDE A **COMPETITION SIZED GYM, AUDITORIUM, AND GATHERING SPACES** THAT COULD BE USED FOR MEETINGS.

AUDITORIUM HAS BEEN DESIGNED TO **SUPPORT MUSIC AND PERFORMING ARTS PROGRAMS** AND ACT AS A **SCHOOL AND A COMMUNITY RESOURCE** WITH SEATING CAPACITY FOR 600

ACADEMICS • SUSTAINABILITY • SAFETY • COMMUNITY

PROPOSED NEW

# BOOTHBAY REGION HIGH SCHOOL

175 STUDENTS + 28 STAFF

